



Tiara
YACHTS

2021 STANDARDS & OPTIONS

C53

53 COUPE

SPECIFICATIONS

L.O.A.	54'6" - 16.6 meters (with Standard Swim Platform)
Beam	15'11" - 4.85 meters
Draft (fully loaded)	4'3" - 1.30 meters
Average Dry Weight	42,770 lbs - 19,400 kg
Height from Waterline to Top of Standard:	
Hardtop	12'2.5" - 3.72 meters
Radar Mount	12'4.5" - 3.77 meters
Garmin® Radar	13'9" - 4.19 meters
Anchor/Navigation Light	14'6.5" - 4.43 meters
Fuel Capacity	650 gallons - 2,460 liters
Water Capacity	150 gallons - 568 liters
Holding Tank Capacity	86 gallons - 325.5 liters
Sleeping Accommodations	
Standard Floor Plan	4
Third Stateroom	6
Deadrise at Transom	14.8°

HULL AND DECK

- Tiara Yachts' transferable limited warranties: five years on hull and deck; two years on accessories
- Fresh white gelcoat hull and deck
- Axalta® Carbon bootline
- Hull constructed with a gelcoat outer layer, balsa cored hullsides and hand-laid fiberglass using premium resin
- Deck constructed with a gelcoat outer layer, balsa and hand-laid fiberglass using premium resin
- Tiara custom diamond pattern non-skid deck and cockpit surfaces
- Wood and foam core stringers, encapsulated by hand-laid fiberglass, are integrated to the hull
- Two coats of anti-fouling bottom paint
- Gelcoated and fiberglass lined bilge areas
- Deck side engine air intake system with built-in step for boarding
- Bronze seacocks on all underwater thru-hull fittings
- Molded in hullside windows with opening ports
- Poly rubrail with 316L SS cap
- Eight 12" stainless steel cleats for lines
- Tiara custom composite hardtop, aluminum windshield frame with tempered safety glass, safety handrails and a windshield wiper system with three washer/wipers
- LED navigation and courtesy lights

FOREDECK

- Bomar® extruded aluminum opening forward deck hatch with built-in Ocean Air® screens and privacy covers
- One-piece, welded 316L SS 1 1/4" bow rail, staff and Tiara burgee
- Flush forward anchor locker with overboard drain
- Concealed Lewmar CPX3 automatic rope/chain anchor windlass system with Lewmar's handheld tethered deluxe remote control and a switch at helm; Includes one 12" stainless steel foredeck cleat, 50' chain one, 200' rope rode and 44 lb. Lewmar® DTX stainless steel anchor
- Windshield cover
- Recessed chaise lounge sun pad with cup holders and handholds; Upholstered in your choice of Ultraleather® and includes weather cover

STANDARD EQUIPMENT

TRANSOM AREA

- Dual transom entry doors with stainless steel frame and hardware
- Stainless steel grab rails on transom
- Transom storage compartment with fiberglass liner and one-piece actuated door; Dedicated storage with easy access to items and large opening to trunk space
- Two 10" SS pop-up cleats
- 70" integrated swim platform with telescoping stainless steel swim ladder
- Recessed transom shower, hot and cold water
- Freshwater washdown outlet with 25' coiled blue hose
- Raw water washdown outlet with 25' coiled yellow hose
- 120V GFI outlet

AFT COCKPIT

- Makefast Marine® powered sunshade
- Molded-in forward facing lounge
- Teak aft cockpit table with ottomans
- Molded-in steps to deck walkways and swim platform; Safety handrails above deck walkway steps
- Cockpit LED courtesy lighting with remote control
- Port and starboard cockpit aft facing seats with storage below starboard seat and cooler under port seat
- See Salon and Helm Area for main stereo component details; Two exterior JL® Audio 7.7" component speakers and one JL® Audio 8" subwoofer powered by a JL® Audio and Fusion® remote
- Weather covers for cockpit furniture
- Aft cockpit camera

INTERIOR GROUP

- Architectural teak and beechwood interior wood with grain-filled finish and Reed Seashell Chilewich® wall covering throughout
- Solid teak floor in salon, lower atrium and utility room
- Three skylights with built-in blinds
- 120V outlets throughout
- 12V LED lighting throughout
- Six accent pillows

SALON AND HELM AREA

- Powered sunroof
- Aft window and sliding doors with duette blinds
- Duette blinds for port and starboard salon windows
- 40" 4K Smart TV mounted on a hi-lo actuator (concealed when not in use) and storage compartment; Includes soundbar and Blu-Ray player
- Fusion® UHD multi-zone stereo system powered by JL Audio® digital amp with four JL Audio® interior speakers and one Polk Audio® 8" subwoofer speaker with tuned enclosure
- Sirius® Satellite weather & radio ready (subscription necessary but NOT included)
- Marine Air Systems® 40,000 BTU salon air conditioning system
- Opening port and starboard side windows
- Starboard side, port facing, love seat with electric panel access and storage

- Port L-lounge sofa with storage and high gloss teak table on actuated hi-lo pedestal and seating for five
- Ultraleather® Stidd® captain's chair with vertical, fore and aft adjustment; Includes Garmin® GRID armrest remote
- Companion chair that slides fore and aft with adjustable backrest for facing forward or aft
- Helm with drink holders, USB, 12V and 120V outlets, and 17.5" leather-wrapped steering wheel

CENTRAL GALLEY

- Safety handrails
- Quartz countertops
- Stainless steel, undermount sinks with hot/cold water faucet
- Recessed three burner electric cooktop, exhaust fan, and backsplash
- Dual Isotherm® 120V drawer units - one refrigerator/refrigerator and one refrigerator/freezer
- Microwave-convection oven
- Storage drawers below countertop
- Upper galley cabinets, port and starboard
- Waste receptacle

LOWER ATRIUM & UTILITY ROOM

- Storage room with linen closet and Splendide® 110V stackable washer/dryer

MASTER STATEROOM

- Private entrance to master stateroom and head
- Full beam master stateroom with hullside windows for natural lighting and blinds for windows; Opening ports for ventilation in master stateroom and head; Port side blind is electrically controlled
- Plush carpeted flooring
- Olympic queen pedestal berth with pillowtop innerspring mattress, upholstered head board, coverlet, pillow shams, accent pillows, mattress pad and luxury linen sheets
- Storage compartment below berth manually actuated with gas springs
- Shelves, starboard side, fore and aft of headboard
- Port side lounge with accent pillows
- Cedar-backed hanging locker
- Overhead indirect LED lighting
- Two LED reading lights
- Marine Air Systems® 16,000 BTU air conditioning system for master stateroom and master head
- 32" Smart TV
- Blu-Ray DVD player
- Four JL Audio® 4" speakers with Fusion® remote

MASTER HEAD

- Full frame door with private master stateroom entry
- Fiberglass stall with overhead waterfall shower head, solid surface accents, sump pump, glass shower door and teak seat
- Teak and beechwood vanity with solid surface accents, storage below, vessel sink and single lever faucet
- Upper medicine cabinet with mirror

- Privacy shades for opening portlights
- Solid teak floor
- VacuFlush® push button toilet
- Exhaust fan
- Air conditioning vent (controls in master stateroom)
- GFI protected outlets

VIP STATEROOM

- Private entry to VIP head
- Solid teak floor with carpeted risers
- Queen size pedestal berth, splits to make double berths; Innerspring mattresses, coverlet, pillow shams, accent pillows, mattress pads, luxury linen sheets and storage under the berth
- Bi-fold entry doors
- Cedar-backed hanging locker
- Upper hullside cabinets
- Two opening portlights with privacy shades
- Opening deck hatch
- Two LED reading lights
- Marine Air Systems® 10,000 BTU air conditioning system
- Two JL Audio® 6.5" speakers with Fusion® remote

VIP/DAY HEAD

- Full frame doors with entry from VIP stateroom and atrium
- Fiberglass stall shower with sump pump, glass door and teak seat
- Teak and beechwood vanity with solid surface accents, storage below, vessel sink and single lever faucet
- Upper medicine cabinet with mirror

- Solid teak floor
- VacuFlush® push button toilet
- Exhaust fan
- Air conditioning vent (controls in VIP stateroom)

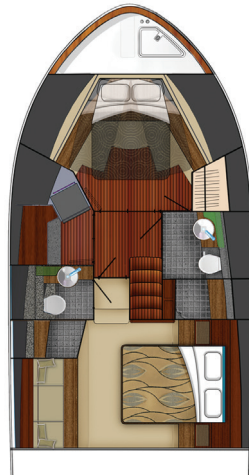
INSTRUMENTATION, SAFETY AND EQUIPMENT

- Tiara custom 12V/24V DC and 120V/240V AC electrical system with master distribution panels concealed under salon love seat
- 240V AC 50 amp 65' dockside power cord with Glendinning® cable recoiler and adaptor for 30 amp service
- Cable TV inlets/outlets with 65' dockside cord
- TV & AM/FM radio antennas
- Onan® 13.5kW diesel generator with sound shield and helm indicator
- Two battery chargers: 80 amp 12V and 16 amp 24V
- 12V/24V multiple bank battery system with batteries and remote battery switches; Four engine batteries and two house batteries
- Electrical bonding system with galvanic isolator and ELCI circuit protection
- Volvo® engine package includes:
 - DPS (Dynamic Positioning System)
 - Active Corrosion Protection
 - Volvo® electronic engine controls and steering system
 - Low speed, cruise control & trip computer software
 - Volvo® IPS Joystick Plus control
 - Volvo® exhaust bypass
 - Volvo® Glass Cockpit integrated electronics package:
 - Two Garmin® 8600 Series displays with GRID armrest remote and joystick steering
 - Garmin® autopilot
 - Garmin® Fantom 54, 48" open array radar
 - Garmin® VHF with handheld radios
 - 1kW transducer
- Three port oil changing system, main engines and generator
- Ritchie® SuperSport SS2000 compass
- Propellers
- Trim tabs
- Zinc sacrificial anodes
- Engine room with lighting and acoustical insulation

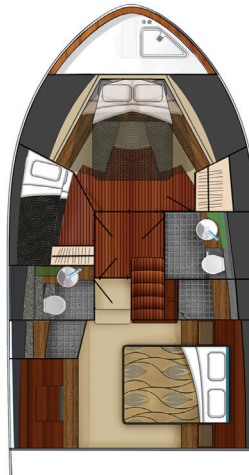
- Racor® fuel filters/water separators, engines and generator
- Raw water intake strainers, engines and generator
- Vibration isolating mounts, engines and generator
- Plate mounted, thru-bolted engine system
- Three port oil changing system, main engines and generator
- Three automatic/manual electric bilge pumps with monitors at helm, 2,000 GPH each: one forward, one mid and one aft
- Aluminum fuel tank, total capacity 650 gallons, with in-line fuel vent filters, fuel shut-off valves on top of tank and fills on both port and starboard sides
- Dockside water inlets, aft deck and anchor locker
- Fresh water tank, total capacity 150 gallons
- Holding tank, 86 gallons, with deck discharge and holding tank vent filter
- Fresh water tank/holding tank monitor
- Fresh water pressure system with two 4 GPM pumps
- Water heater, 20 gallons
- Kahlenberg® chrome dual trumpet air horn
- FE-227 agent automatic/manual fire extinguisher system for engine room
- Four handheld fire extinguishers
- Carbon monoxide detectors and smoke detectors in all staterooms and salon
- Eight 5/8" x 50' black dock lines
- Dedicated storage for dock lines and fenders
- Eight Tiara life vests (domestic boats only)
- USCG approved electronic flare
- USCG/international LED navigation lighting
- NMMA certified using ABYC standards
- International certification options available (European CE and others)



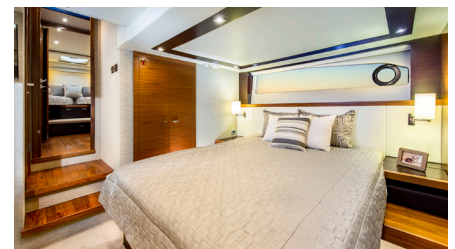
Standard Upper Salon, Galley & Cockpit Floor Plan



Standard Lower Floor Plan



Lower Floor Plan with Optional 3rd Stateroom



53 COUPE

DIESEL ENGINE

- Twin Volvo® IPSII 950 with Joystick Plus control, 725 HP..... 1,870,900
- CAT® 12.9 Twin Engine with Glendinning Joystick Control, Trolling Valves and Variable Speed Bow Thruster, 1000 HP..... 1,888,900

MECHANICAL GROUP

- ProSine 1800 inverter 5,330
- Forward deck shore power.....6,030 (includes 25' cable TV cord, 25' 50 amp shore power cord)
- Seakeeper® 9 Gyro 128,580
- Macerator system for heads 2,130
- Lenco® auto trim 4,030
- Reverse osmosis water maker, 38 GPH..... 30,580
- Anchor locker washdowns (may order both)
 - Raw water 980
 - Fresh water 980
- All chain windlass with remote at helm (in lieu of standard rope windlass) 2,780

HULL, DECK & AFT COCKPIT GROUP

- Teak inlay on standard swim platform.....24,180
- Hydraulic swim platform 67,080
- Hydraulic swim platform with teak inlay 81,880
- Integrated dinghy chock system 9,880 (available on hydraulic platforms only)
- Underwater lights, (4) multicolor LED ... 3,980
- Aft cockpit carpet 1,580
- Cockpit TV 2,980
- Electric cockpit grill (transom) 2,330
- Refrigerator under transom grill (in lieu of storage) 2,380
- Teak decking, aft deck 29,930
- Phantom® retractable screen door with magnetic latch 5,000

ELECTRONICS GROUP

- Camera - Engine Room 2,780
- Volvo® Joystick Plus, cockpit20,630
- Pre-wiring for satellite TV 1,530
- ACR® RCL100 LED remote spotlight (mounted on bow) 3,480
- Satellite Ready TV Mast (in addition to standard radar mast)7,000

INTERIOR GROUP

- Flat screen TV & Blu-Ray DVD player
 - VIP/forward stateroom 1,880
 - Optional third stateroom 1,880

OPTIONAL EQUIPMENT

- Teak flooring (in lieu of standard carpet)
 - Master (aft) stateroom6,880
 - VIP (forward) stateroom 4,230
- Galley Fridge/Freezer/Icemaker Configurations (Standard is Fridge/Fridge & Fridge/Freezer)
 - Fridge/Fridge & Fridge/Freezer with Icemaker 3,400
 - Fridge/Freezer & Fridge/Freezer with Icemaker 3,400
 - Fridge/Freezer & Fridge/Freezer ... 1,980
- Starboard Galley Storage Cabinet (Choose one and in lieu of standard storage)
 - Icemaker 2,780
 - Beverage cooler 1,130
- Garbage disposal930
- Port and Starboard upper galley cabinets2,630
- Central vacuum..... 830
- Third stateroom bunks7,980 (In lieu of standard utility room)
- Master stateroom washer/dryer (110V) combination unit 6,430 (only available with optional third stateroom - replaces standard lounge and includes full length port dresser with drawer storage and aft hanging locker)
- Full length port dresser, master stateroom (in lieu of standard lounge) 2,930

COLOR SELECTIONS

- Hull Color
 - Fresh White Gelcoat.....Standard
 - Axalta® Paint 38,900
- Specify color below: _____

- Axalta® Paint Color Bootline Options Standard
- If custom color is not selected, Carbon is standard on Fresh White gelcoat hulls & Crystal White is standard on painted hulls
- Custom Color - Specify color below: _____

- Axalta® Paint Accent Stripe 2,700
- Specify color below: _____

- One quart of hull paint 650

- Anti-fouling bottom paint
 - Black Blue

- Cockpit & Sunpad Upholstery Options (Choose One)

- Ultraleather® Only
- Coast Dolphin
- Ermine
- Whitewater
- Ultraleather® & Fabric
- Coast Dolphin & Topsail/Oyster
- Ermine & Topsail/Oyster
- Ermine & Cove/Canvas
- Ermine & Friendly/Natural
- Whitewater & Cove/Canvas

- Interior Accent Color Package

- Golden Sunrise Marine Layer
- Midnight Sun Misty Dawn

- Stidd® Helm Seat Ultraleather® Options
 - Coast Dolphin
 - Ermine
 - Whitewater

- Salon Sofas Upholstery Options (Choose one)

- Ultraleather® Only
- Coast Dolphin
- Ermine
- Whitewater
- Ultraleather® & Fabric (Backrest & Armrest)
- Coast Dolphin & Topsail/Oyster
- Ermine & Topsail/Oyster
- Ermine & Cove/Canvas
- Ermine & Friendly/Natural
- Whitewater & Cove/Canvas

- Master, VIP and Optional Third Stateroom Berth Keeper Ultraleather® Options

- Coast Dolphin
- Ermine
- Whitewater

- Master Stateroom Lounge Upholstery Options

- Ultraleather® Only
- Coast Dolphin
- Ermine
- Whitewater
- Ultraleather® & Fabric (Backrest & Armrest)
- Coast Dolphin & Topsail/Oyster
- Ermine & Topsail/Oyster
- Ermine & Cove/Canvas
- Ermine & Friendly/Natural
- Whitewater & Cove/Canvas

- Solid Surface Countertop on Trunk Lid

- Aurora Ash Aurora Creme
- Weathered Aggregate

- Quartz Countertops in Galley

- Coarse Peppered Leather
- Bianco Marmor
- Valente Pearl

- Solid Surface Countertop and Accents in Heads

- Aurora Ash Aurora Creme
- Weathered Aggregate

INTERNATIONAL OPTIONS

- International conversion package Not available on domestic boats. Pricing available thru international dealers. Specify country below: _____

- Cradle 4,847

MISCELLANEOUS OPTIONS

- Apply PropSpeed® to Drives and Props (only available on Volvo IPS) 1,190

- DO NOT WINTERIZE** (available as temperatures allow)

Please contact your dealer for freight, prep, and commissioning charges along with tax, title, and registration fees as these are not included.

NOTE: Specifications are based on available information at time of printing. Actual specifications may vary. Tiara Yachts reserves the right to change product line specifications, equipment, color schemes, and pricing, or to discontinue models at any time without notice or obligation.

EFFECTIVE DECEMBER 28, 2020